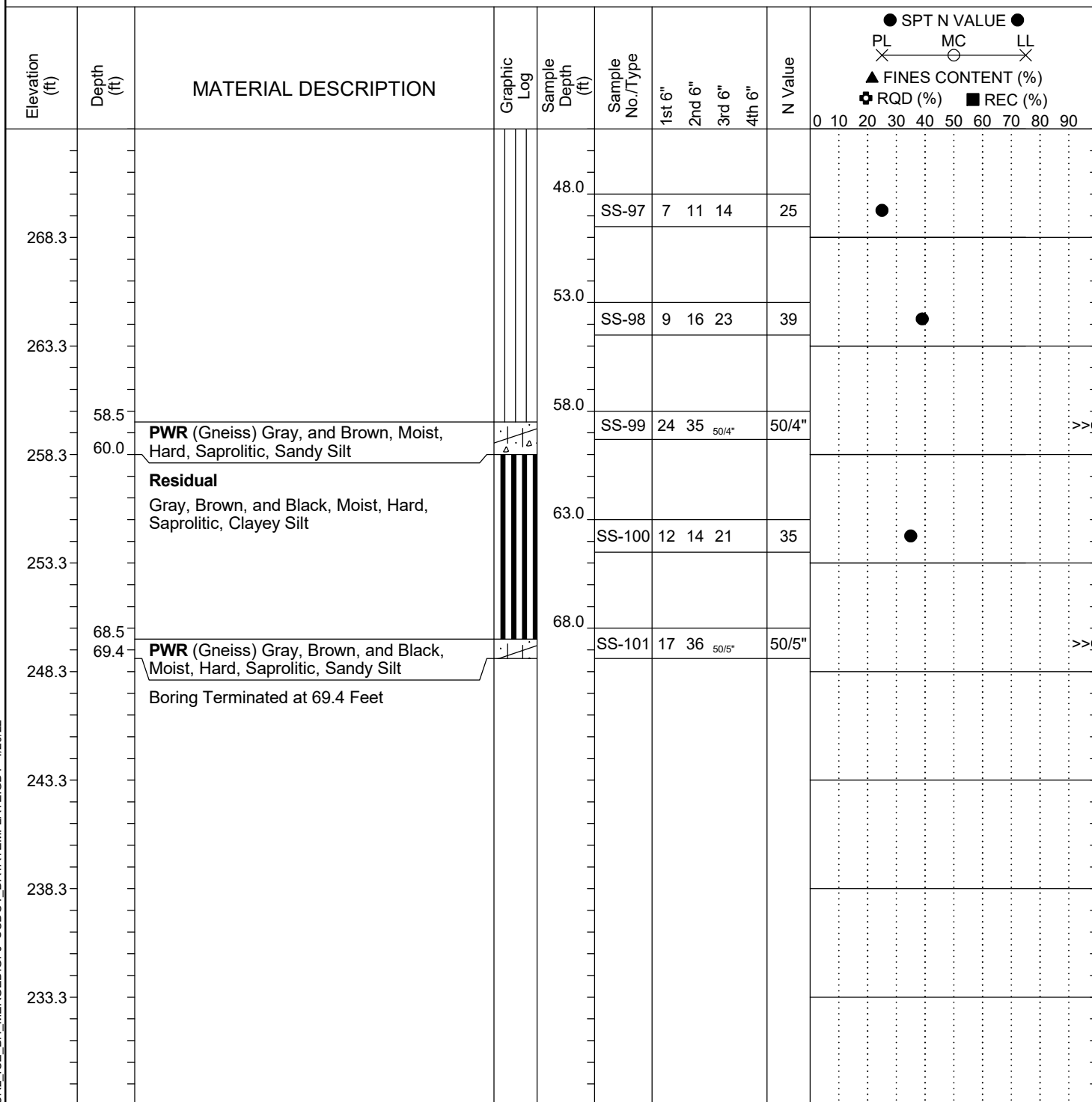


Project ID: P039719				County: Richland		Boring No.: G-139		
Site Description:		Carolina Crossroads Phase 2 - Bridge 42B					Route:	Broad River Rd.
Eng./Geo.: M. Stanbury		Boring Location: 204+92		Offset: 107 RT		Alignment: I20CL		
Elev.: 318.3 ft	Latitude: 34.03937442	Longitude: -81.0929833		Date Started:		2/15/2022		
Total Depth: 69.4 ft	Soil Depth: 69.4 ft	Core Depth: N/A ft		Date Completed:		2/15/2022		
Bore Hole Diameter (in): 2.25		Sampler Configuration		Liner Required: Y (N)		Liner Used: Y (N)		
Drill Machine: D-50 #439	Drill Method: RW		Hammer Type: Automatic		Energy Ratio: 90.8%			
Core Size: N/A	Driller: R. Cassell		Groundwater: TOB N/A		24HR	30.8 ft		



LEGEND

SAMPLER TYPE		DRILLING METHOD	
SS - Split Spoon	NQ - Rock Core, 1-7/8"	HSA - Hollow Stem Auger	RW - Rotary Wash
UD - Undisturbed Sample	CU - Cuttings	CFA - Continuous Flight Augers	RC - Rock Core
AWG - Rock Core, 1-1/8"	CT - Continuous Tube	DC - Driving Casing	